

Read n. Ride

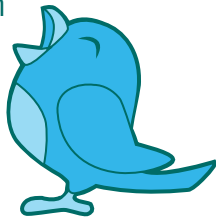
March 2010



Join RTD on Facebook and Twitter and you could win a Regional Monthly Pass!

You can find RTD at more than 10,000 bus stops and 36 light rail stations throughout the metro area. Now, you can also find RTD on Facebook and Twitter!

Connect with us — and a growing community of fellow RTD fans and followers — to learn more about our latest news, special events, fun facts and more. It's a great way to stay up-to-date on everything RTD, including FasTracks.



Continued on page 2

What's Inside

New scooter, motorcycle and bike parking coming to select RTD facilities	Page 3
Shop RTD online and receive FREE shipping and handling	Page 5
Fare evasion isn't fair to anyone	Page 6
Lose something? Don't forget our Lost & Found	Page 9

Join RTD on Facebook and Twitter and you could win a Regional Monthly Pass! Continued from page 1.

Plus, we're giving away a Regional monthly pass to three lucky fans and three lucky followers just for joining us on Facebook or Twitter by **Tuesday, March 16, 2010**. The randomly selected winners will be announced on Facebook and Twitter on March 17, 2010.

So what are you waiting for? Find us today — we'll be looking for you!

[Facebook.com/RideRTD](https://www.facebook.com/RideRTD)

[Twitter.com/RideRTD](https://twitter.com/RideRTD)



Each year, RTD performs an evaluation of FasTracks costs, sales tax revenue projections and schedule. This annual process gives RTD an opportunity to take into account current market conditions and changes in the economy. Based on the 2010 evaluation, the cost to build FasTracks by 2017 is now estimated at \$6.5 billion — a \$400 million decrease from the 2009 cost estimate. Nevertheless, additional revenues are needed through a 0.4 percent sales tax increase to complete the entire plan on schedule. Without additional revenue, the plan will not be completed until after 2035. The RTD Board of Directors has not decided whether to pursue a sales tax increase in 2010. However, the longer it takes to build out FasTracks, the more expensive it will be to complete. The RTD Board is expected to decide on a 2010 tax vote in early April. As always, RTD is committed to implementing the full FasTracks plan and will continue to pursue any viable alternative revenue sources to help close the budget gap. To stay up to date on the status of the FasTracks plan, go to **RTD-FasTracks.com**.

New scooter, motorcycle and bike parking coming to select RTD facilities

With the increasing popularity of two-wheeled transportation, RTD is in the process of making improvements to bike, scooter and motorcycle parking at 17 locations throughout the metro area. Enhancements will include new lockers, new high-density bike racks called the bike tree, segregated parking for scooters and motorcycles and new signage. These improvements will not displace vehicle parking spaces at park-n-Rides.

These upgrades are currently being implemented at these locations: Alameda Station, Belleview Station, Boulder Transit Center, Broadway and 27th Way park-n-Ride, Colorado Station, Denver Union Station, Dry Creek Station, Englewood Station, Evans Station, Littleton/Downtown Station, Littleton/Mineral Station, Market Street Station, Nine Mile Station, Orchard Station, Table Mesa park-n-Ride, Wagon Road park-n-Ride and Yale Station. These sites are considered top priority due to the high demand over the past two years. The completion of these enhancements is scheduled for spring 2010.



**The Bike Tree
(a high-density
bike rack)**

In other bike-related news, RTD will be hosting four sites for the Denver Bike Share Program being introduced this spring. The RTD sites include Denver Union Station, Market Street Station and the Louisiana/Pearl and University of Denver light rail stations.



Shop RTD online and receive FREE shipping and handling

We all like things that make life easier, and when those things don't cost a penny extra, it's even better! With RTD, you can enjoy the ease of purchasing your passes and 10-Ride Ticketbooks online — and the benefit of getting shipping and handling for **FREE**.

Just go to **RTD-Denver.com/OnlineStore** to purchase your favorite RTD products, including monthly passes, 10-Ride Ticketbooks and day passes. No matter which product you choose, you'll receive **FREE** shipping and handling.

And here's an easy solution if you need a gift for your transit-taking friends: Buy them RTD gift certificates available in denominations of \$25, \$50, \$75 and \$100. These electronic gift certificates are only sold online and will be delivered via email within one business day of purchase. They can only be used online and cannot be redeemed at any other RTD sales outlet. When making a purchase with a gift certificate, any difference in price on the product being purchased must be paid with Visa, MasterCard, Discover or PayPal. If the amount of the purchase is lower than the amount of the gift certificate, the remaining value will be available for future purchases.

Worried about online security? Don't be. It's safe to buy your pass or ticket book online at RTD.

We use a secure shopping cart application by Verisign® that keeps your information confidential and secure. Easy, safe and economical: Three great reasons to start shopping online at RTD!



Fare evasion isn't fair to anyone



In today's economy, everybody is looking for ways to save money — but not paying your fare shouldn't be one of them! RTD counts on revenue from passengers to provide and improve transit services. That's why it's important for all passengers to pay the full fare when riding buses and light rail.

It is against the law not to pay the full fare (18-4-802 C.R.S. Theft of Transportation Services by Fare Evasion). Non-payment of the fare could result in a fine of up to \$121 and is a criminal offense and goes on your permanent record.

One of the best ways to save money if you are a frequent rider is to purchase a 10-Ride Ticketbook or monthly pass. To order a ticket book or pass, visit an RTD sales outlet, call **303.299.6464** or go to **RTD-Denver.com/OnlineStore**.

Official RTD passes are sold only at RTD sales outlets, including King Soopers and Safeway stores. It is a felony to make, use or intend to use a forged public transportation pass, and it is a criminal offense to evade fares on public transportation. To stay on the right side of the law, please make sure your RTD pass is legitimate by purchasing it at an authorized outlet.

To enhance our fare-inspection program, city police officers, RTD fare inspectors and security officers conduct fare inspections and fare enforcement on light rail and bus routes. Fare inspections can take place at any time and can be conducted at stations or stops prior to boarding.

All passengers must be able to produce proof of valid fare payment before boarding a bus or while riding on an RTD light rail vehicle.

OPERATOR APPRECIATION

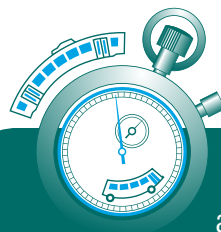
Station

This month's operator: Robert Bau

The winning commendation for Robert Bau was submitted by RTD passenger Rande R. Florey, who was traveling on Route 120X in December 2009:

“Our 120X Express driver stands out among others. With daily reliability, we can count on him to get us to our destination safely and comfortably as an exceptional driver. He is always helpful to others with questions or problems. Notably, he is the consummate professional with his smile and courteous, polite greeting of every passenger. He always wishes them a pleasant good morning and says “thank you” to each. He announces his route and destination before departing, which is helpful to new passengers or to those who got on the wrong bus. He also advises of stops in advance, which helps those who have been talking to others, reading, sleeping, listening to music, lost track of time or may need extra time to gather belongings. As we leave his bus, he thanks us for riding with him and wishes us a good day, providing that personal touch to an otherwise routine commute. He consistently demonstrates genuine thoughtfulness of others. He represents RTD very well and is deserving of recognition for a job well done. His passengers are the welcome beneficiary of his skills and sincerity.”

Do you have a favorite RTD bus or light rail operator? To submit your commendation, go to RTD-Denver.com/ReadnRide. Click *Submit Your Operator Appreciation Station story*. On the *Customer Comment* form next to *Subject*, select *Commendation* in the drop-down box. We will publish the chosen commendation in the *Read-n-Ride* if you check the box giving us permission to print your story and include your physical address. As a token of our appreciation, the respondent with the chosen commendation will receive a **FREE** RTD promotional item.



Transit Briefs

FREE 2010 system maps are available at the Market Street and Civic Center stations and the Boulder Transit Center. The system map can be viewed online at RTD-Denver.com/SystemMaps. To have one mailed to your home, call the Telephone Information Center at **303.299.6000**.

Our light rail operators kindly ask that pets not be allowed to wander onto tracks around these light rail stations that are situated near residential areas: Englewood, Evans, Dayton, Littleton/Downtown, Oxford-City of Sheridan, University of Denver, Louisiana & Pearl and 10th & Osage. Keep your pets safe and away from light rail trains!

The RTD Board of Directors meeting will be held on Tuesday, March 23, 2010 at 1600 Blake Street in Rooms R, T and D in Denver. The meeting will start at 5:30 p.m.

Lose something? Don't forget our Lost & Found

Passengers who lose or forget something on a bus or train can call or visit RTD's Lost & Found facilities after 12:30 p.m. on the first business day after the item is lost. Found items are kept for 10 days. (If you find an item on a bus or train, please give it to the operator or an authorized RTD representative.)



Lost & Found locations

Boulder	Boulder Transit Center 1400 Walnut Street Boulder, CO 80302 303.442.7332
Pick-up hours:	Monday – Friday 7:00 a.m. – 6:30 p.m.
Denver	Civic Center Station 1550 Broadway Denver, CO 80202 303.299.2288
Pick-up hours:	Monday – Friday 8:00 a.m. – 5:00 p.m.

Bikes left on buses

Bikes accidentally left on buses are held for 20 days. Passengers may contact Lost & Found in Denver

at **303.299.2288** or in Boulder at **303.442.7332** to determine whether a lost bike has been found. The passenger must describe the bike and bus route in order for RTD to identify the correct bike. If the bike is identified, it will be tagged with the owner's name and information, after which it can be picked up at Lost & Found.

Lost bikes will not arrive at the Denver Lost & Found until the following day, so please wait 24 hours before calling to check on a lost bike.

The Boulder Police will pick up any bikes left on buses that have not been retrieved after 20 days. They may be contacted after 20 days for bike retrieval at **303.441.3333**. The Boulder Police offices are located near the Boulder Transit Center.

If the Lost & Found or Telephone Information Center (**303.299.6000**) is contacted shortly after the bike is left on the bus, RTD may be able to track the bus, so the owner can meet the bus and retrieve the bike sooner.

Tips to avoid leaving your bike on a bus:

- When boarding, tell the bus operator where you will be exiting the bus.
- Sit or stand at the front of the bus.
- As you exit from the front of the bus, inform the bus operator that you will be unloading your bike.

Regional Transportation District
1600 Blake Street, Denver, Colorado 80202-1399
♻️ Printed on recycled paper
ThinAirCreative, Inc.

3193-24-03

RTD-Denver.com

303.299.6000

RTD

On The Move