

What is the Northwest Rail Peak Service Study?

The Northwest Rail Peak Service Study continues collaboration between RTD, local transportation partners, and northwest area community stakeholders to provide a rail solution for the northwest area.

Northwest Rail is a proposed commuter rail service from Denver Union Station to Boulder that terminates in Longmont. In 2004, voters approved Northwest Rail as part of RTD's FasTracks transit expansion program.

The first segment, known as the B Line, operates between Denver Union Station and Westminster Station at 72nd Avenue.

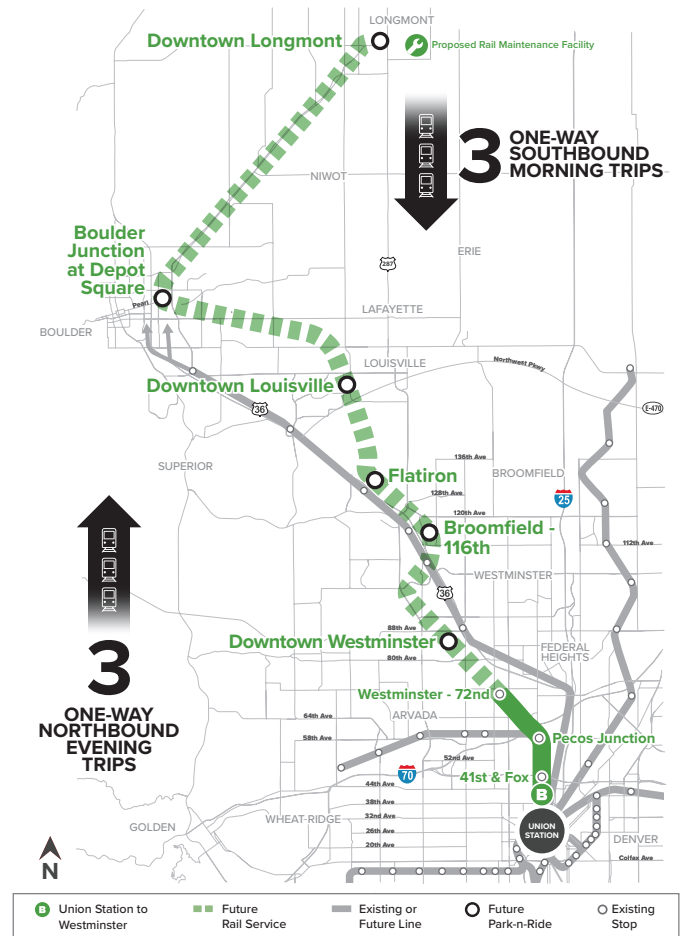
The Study is evaluating extending commuter rail service from the existing Westminster Station to Boulder and Longmont using the freight railroad tracks owned by Burlington Northern Santa Fe (BNSF) Railway.

The Study is identifying the requirements, costs, and operational needs to upgrade the track and build six new rail stations in Westminster, Broomfield, Louisville, Boulder, and Longmont.

Findings and recommendations will help RTD and partners determine the feasibility of extending rail service through an initial peak service approach. This approach consists of three weekday morning trips from Longmont to Denver and three weekday evening trips from Denver to Longmont.

While the Study is focused on peak service, it will identify opportunities to implement full day service in the future as ridership increases.

Proposed Service Route



Study Snapshot



Planning rail operations for a 35-mile extension from the existing Westminster Station at 72nd Avenue to Downtown Longmont



Partnering with local communities to conceptually design six new stations in Westminster, Broomfield, Louisville, Boulder, and Longmont



Coordinating with BNSF Railway to operate on existing freight railroad tracks



Evaluating potential train types and technologies



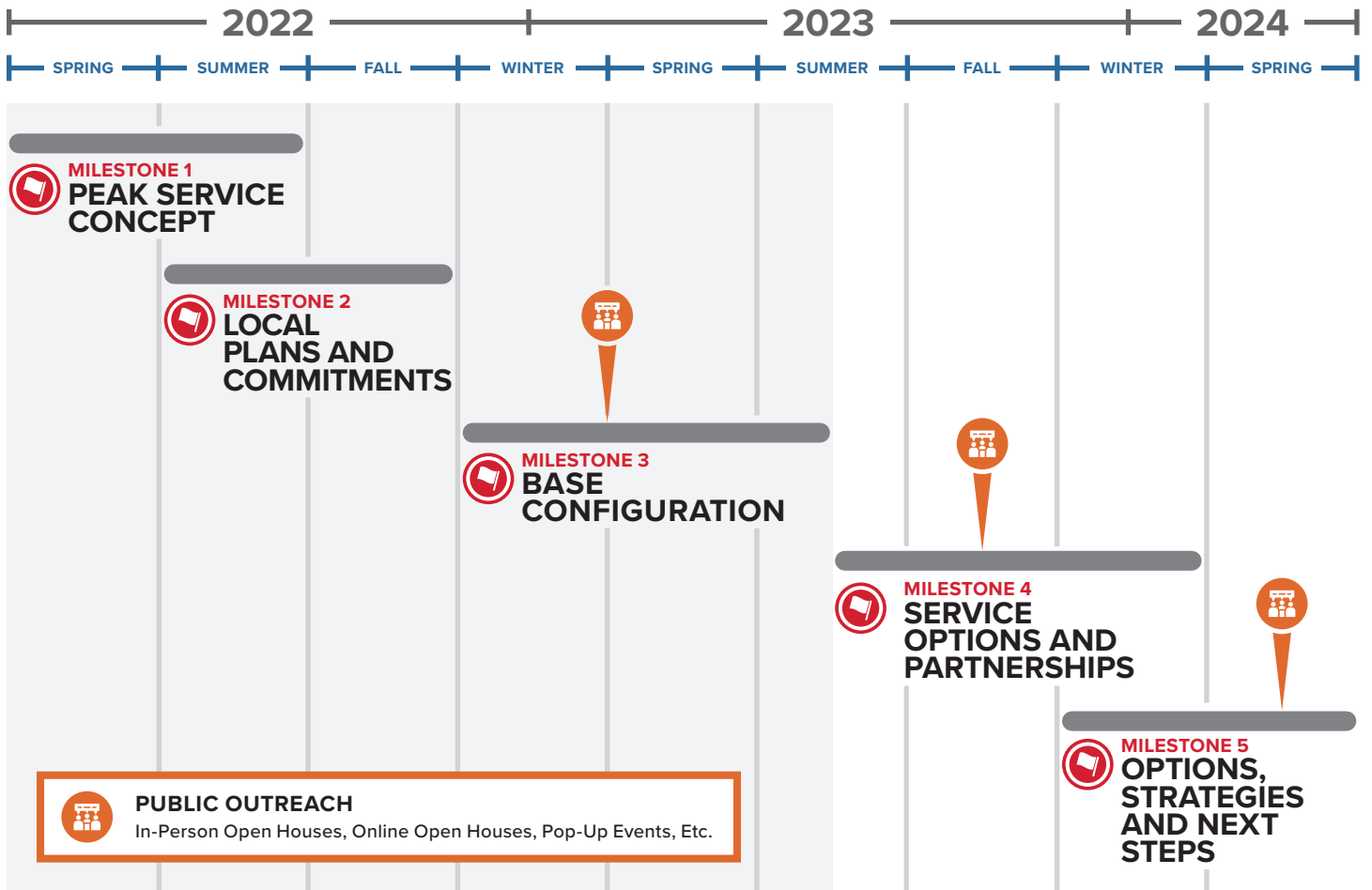
Exploring opportunities for partnership, including with Front Range Passenger Rail District



Identifying feasible locations for a commuter rail maintenance facility near the end-of-line station in Longmont

PEAK SERVICE STUDY SCHEDULE

Help RTD shape the future of rail service in the northwest area. Throughout the Study, there will be multiple opportunities for the community to give feedback and provide input on peak rail service and station concept plans.



JOIN THE CONVERSATION!

Visit the Study website to learn about in-person and online input opportunities.



 rtd-denver.com/projects/northwest-rail-peak-service-study

 720.881.0778

 NorthwestRail@hdrinc.com

SCAN TO
LEARN MORE

